

Lithobox[®]

Pneumatic Lithotripter



*Where technology and efficiency
is delivered with **style!***

Inceler Medikal
www.incelermedikal.com
[CE 1984, ISO 13485]

Your Solution Partner in Pneumatic Lithotripsy
Devices & Spare Parts.

INcer[®]
medical ltd.

Pneumatic Handle Renewal Offer!!!



%100 Water Proof Closed System Pneumatic Handle Type 2



[Stock code: IMPL701 Type 2]

Type 2 does not need any preparation for sterilization.

it's a closed system handle, it can directly submerged inside the sterilization liquid or gas.

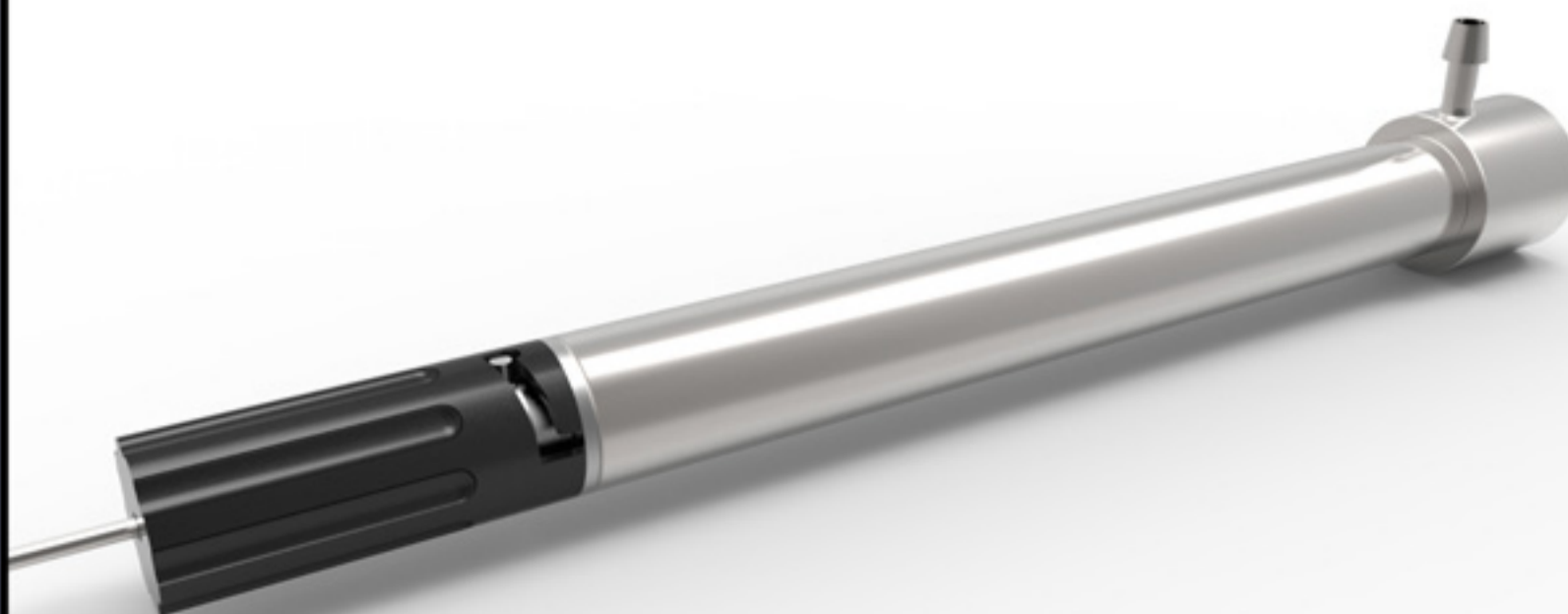
Since the interior mechanism does not contact with water or any other substance, no stoppage will occur due to residue accumulation.



Contact us for
a 15 day demo
Type 2 Pneumatic
Handle.



Type 2 Can Be Connected to All Pneumatic Lithotripters



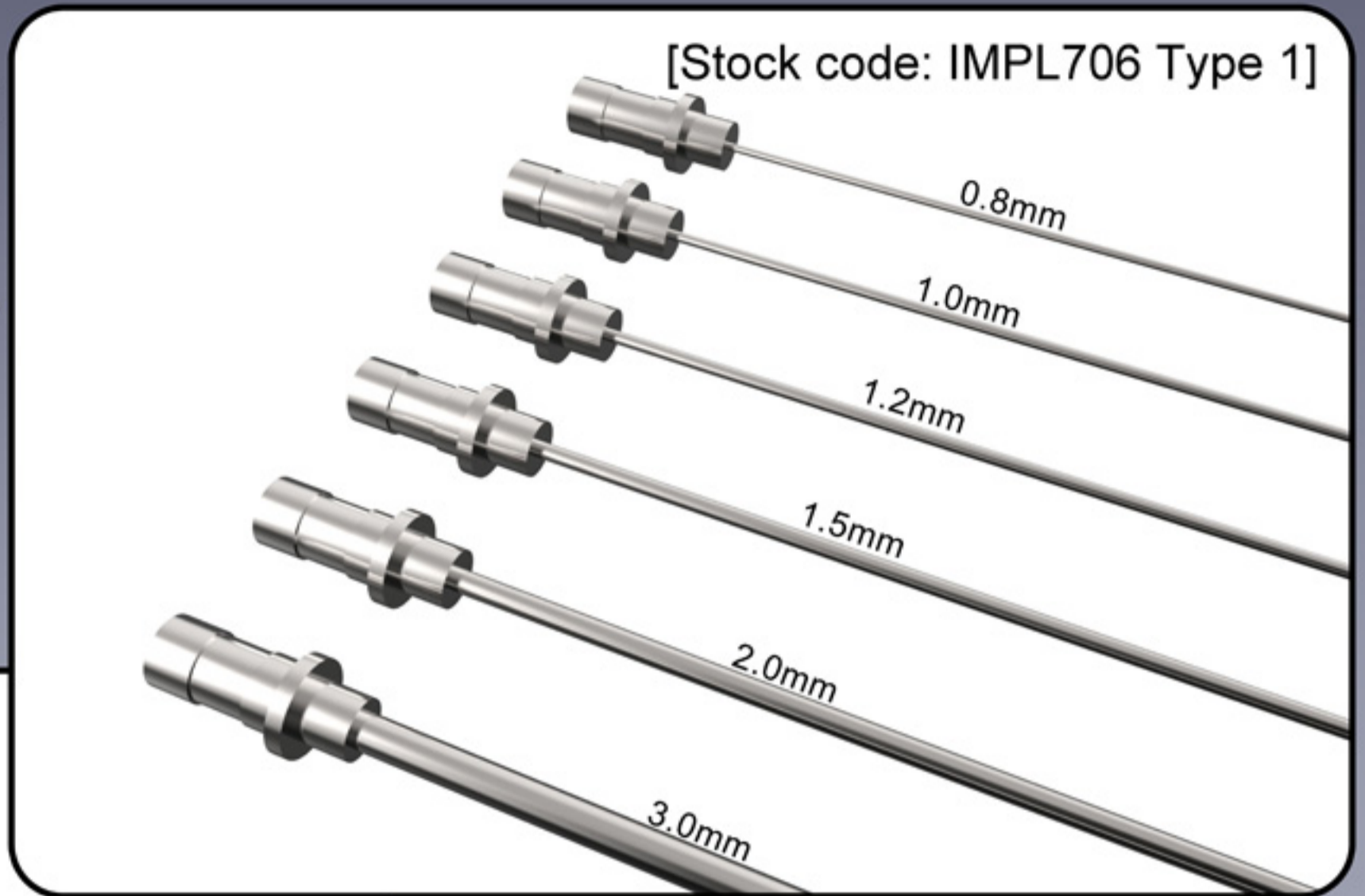
[Stock code: IMPL701 Type 2]



With its' state of the
art mechanism,
operators can single
handedly place
the probs into Type 2

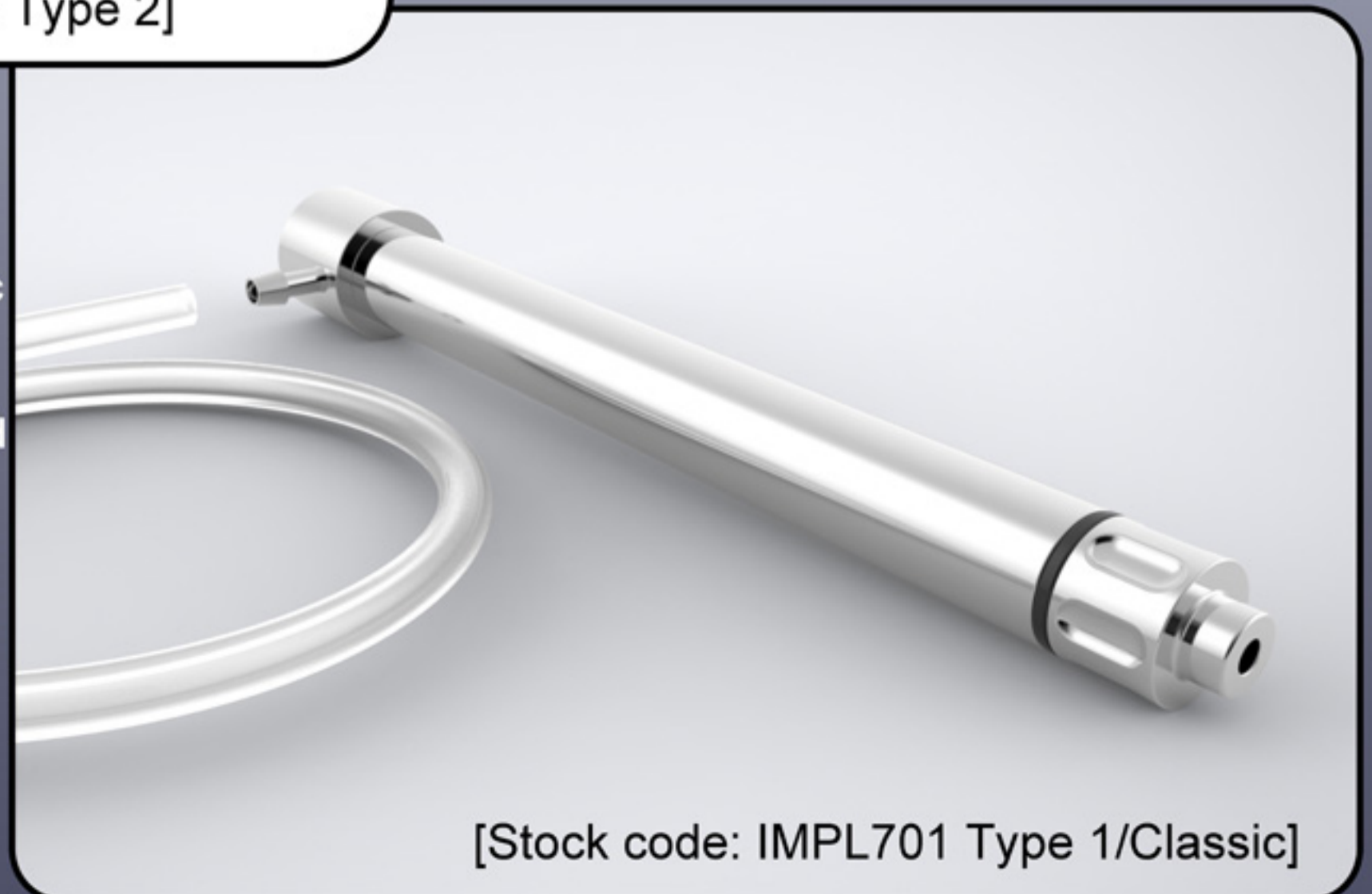
Meet with our technologically advanced probs, and benefit the ease of use they provide!

The probs are manufactured in six different sizes, in the following dimensions: 0.8mm, 1.0mm, 1.2mm, 1.5mm, 2mm, 3.0mm



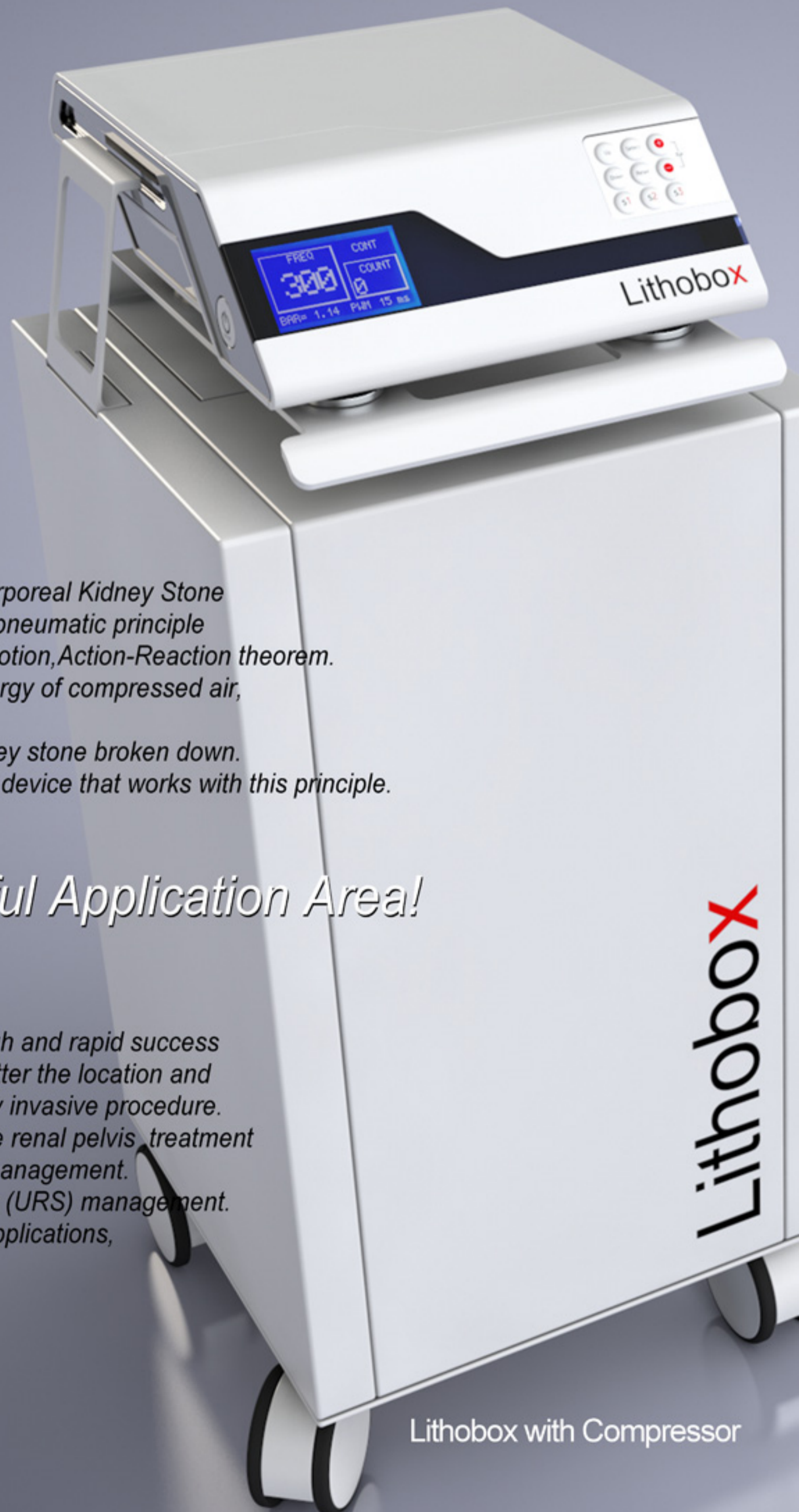
0.8 mm and 1.0 mm probs are fully flexible
1.2 mm prob is semi-flexible.
The probs produced in 1.5 mm, 2 mm and 3.0 mm thicknesses are rigid probs.

All our probs can be used with Pneumatic Handle IMPL701 Classic & Pneumatic Handle IMPL701 Type2. They are also convenient for most of the handles produced by other manufacturers.



We Are Modernizing Your Pneumatic Lithotripsy Devices!

Lithobox[®]



Lithobox[®] Pneumatic Lithotripter is an Intracorporeal Kidney Stone crushing equipment, it is working with electro-pneumatic principle which is based on Ishaac Newton's Laws of Motion, Action-Reaction theorem. Electro-pneumatic ballistic movement and energy of compressed air, creates a force on the kidney stone. This force is transferred to the Stone and kidney stone broken down. Pneumatic Lithotripter Lithobox[®] System is a device that works with this principle.

Effective And Successful Application Area!

Lithobox[®] Pneumatic Lithotripter has got high and rapid success of the treatment in the following areas; no matter the location and type of kidney Stone and provides a minimally invasive procedure.

- Kidney stones are settled in the bottom of the renal pelvis, treatment with percutaneous nephrolithotomy (PCNL) management.*
- Ureteral Stones treatment with ureteroscopy (URS) management.*
- Bleddar Stones treatment with endoscopic applications, ensures success in a short time.*

Lithobox[®]

Lithobox with Compressor



Easy and Convenient Use!

Ergonomic Lithobox® Pneumatic Lithotripter easy to use and follow-up with the help of a digital control system with three different memory channels.

Single and Multiple buttons shot mode selectable as a digital.

The digital counter panel monitored the total number of strokes.

Operation pressure can be adjusted by touch buttons independently from air source. There is a handle on the device which is suitable for use in medical, only air pressure employee, made of corrosion-resistant aluminium, lightweight and orthopedic.

This handle is extremely comfortable to use with different types of flexible, semi-flexible and rigid probes.

Superior Quality and Economic Cost

Lithobox® Pneumatic Lithotripter has got a stylish and practical design, also it has an effective and powerful system in the field of body crushing as a result of R&D activities. Portable bag is practical and easy to get ready for use in the desired location. Central Air System can work with an air compressor or an oxygen cylinder. All materials in the set are the original and are working in harmony with each other.

Safe, effective and this cold working system with a medical isolation transformer; does not carry any electrical risk and does not pose heat therefore tissue damage does not occur. This device minimizes the need for consumables with resterilized durable titanium probes which can adjusted according to length of endoscope and optionally. Also it has got a low installation, maintenance and operation cost.

Lithobox with Stand

Lithobox[®]



Technical Specifications

Brand - Model
Incelmedikal Lithobox[®]

Energy Principle
Completely inelastic collision principle

Energy Source
Compressor , Compressed air (cylinder), or theater wall air supply

Main Supply
Power requirements 220-240V AC, 50/60Hz; 110-120V AC, 50/60Hz, single phase
Power fluctuation $\pm 10\%$ fluctuation
Electrical isolation Transformer protection, 12V DC secondary voltage

Compressed air pressure
Central compressed air supply 0.5-5 bar
*More power at less air pressure

Operating Modes
Energy : Continuous adjustment
Pulse rate : Single or continuous pulses digitally selected
pulse rate (50-720 pulse/min)

Dimensions
Width 320 mm (12.6")
Height 120 mm (4.7")
Length 390mm (13.2")
Weight 3 kg (6.6 lb)

Control Unit
Foot switch-padle (single or continuous)

Display
Alphanumeric backlight LCD display including pulse counts,
frequency, memory conditions, pulse conditions.

Memory
There are tree independent memory buttons that can be used to set
the number of pulses per minute in continuous mode.

Phone: +903122553346 Fax: +903122553347
E-mail: info@incelermedikal.com URL: www.incelermedikal.com
Address: IVOGSAN HASEMEK SANAYI SITESI 22.CAD.1465 SOKAK
NO:4OSTIM,YENIMAHALLE ANKARA/TURKEY

[CE 1984, ISO 13485]

